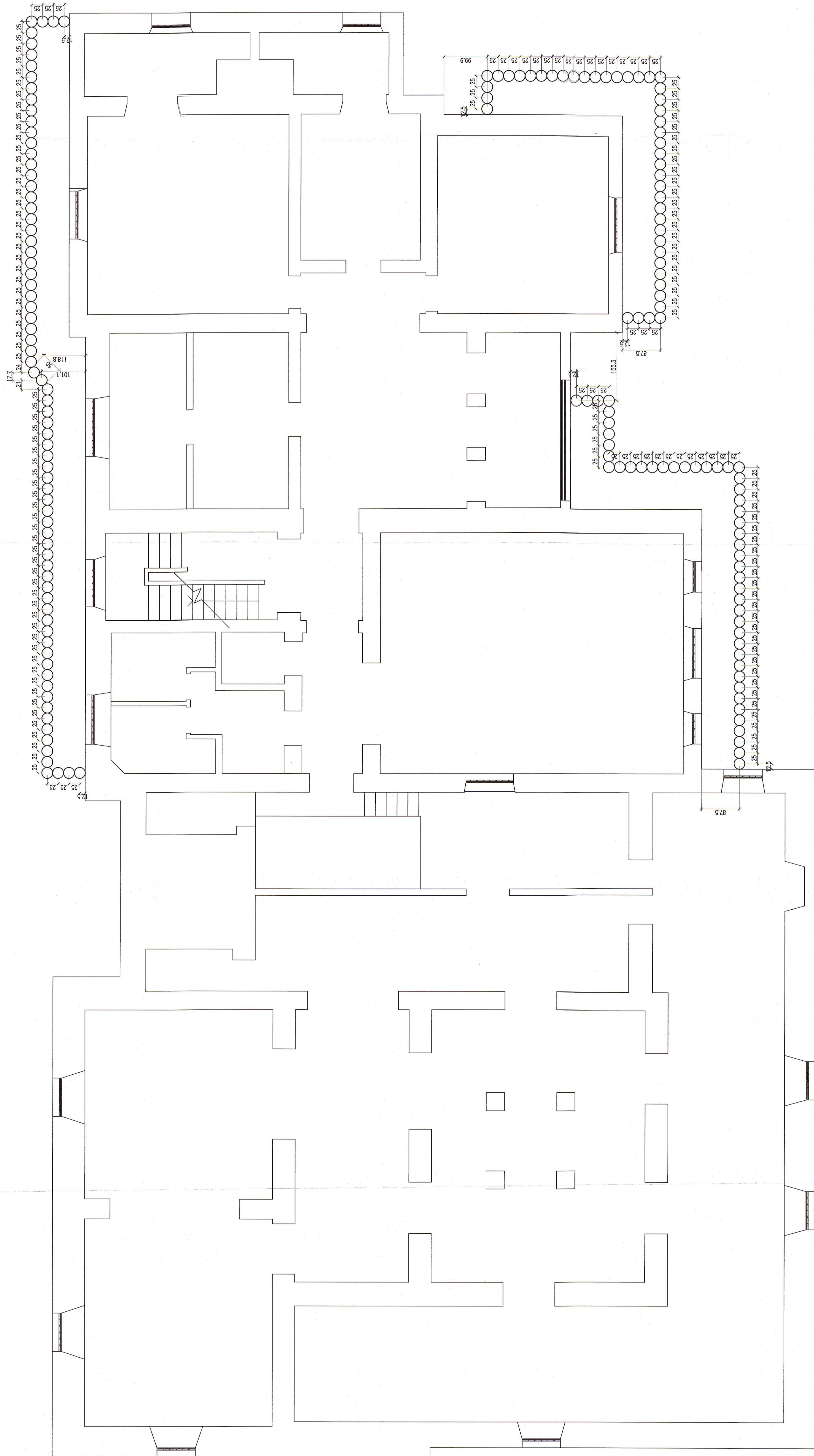
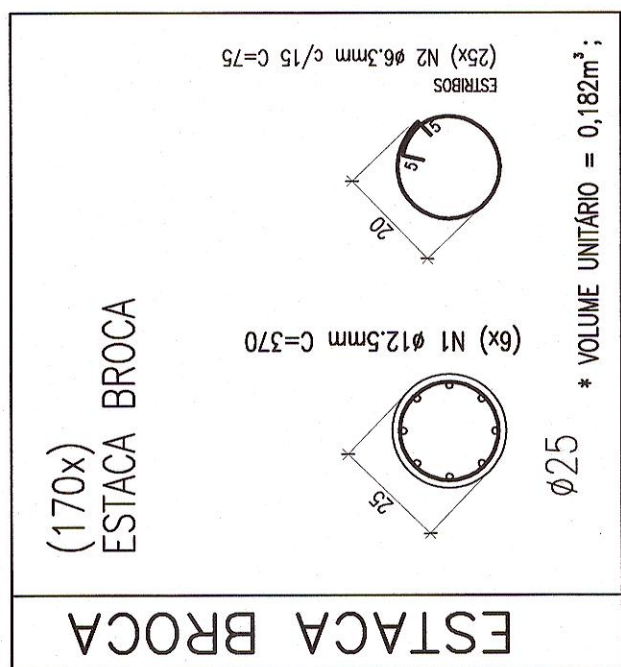
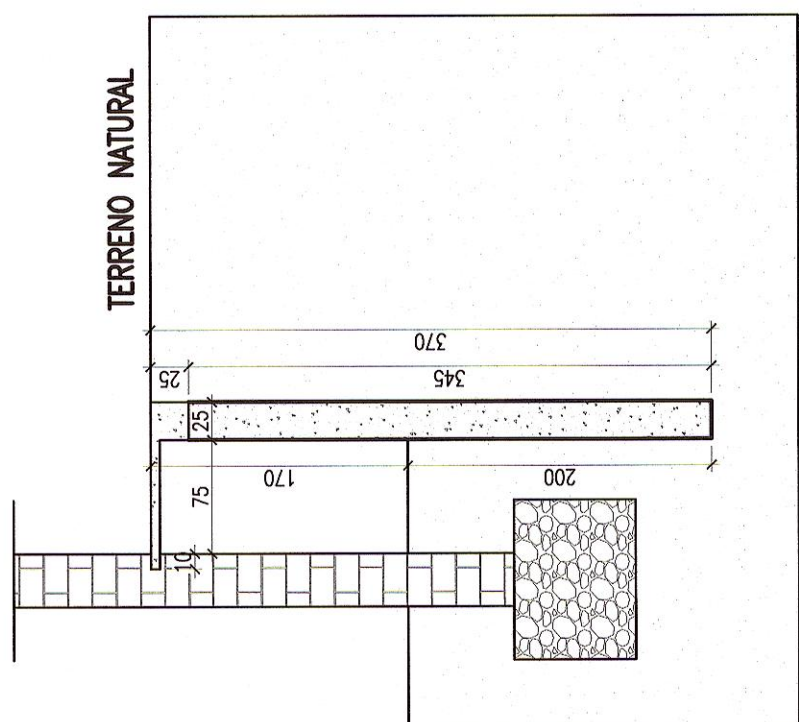


## CORTE ESQUEMÁTICO



LOCAÇÃO DAS ESTACAS DE CONTENÇÃO  
ESCALA \_\_\_\_\_ 1:50

CONCRETO  
CLASSE C25

$f_{ck} \geq 25 \text{ MPa}$   
(250 Kg/cm<sup>2</sup>)

RESUMO DE AÇO	BITOLA		PESO
	mm	pol	
	3,4	5,0	3,16*
	6,0		810
	6,3	1 1/4"	
	8,0	5/16"	
	10,0	3/8"	
	12,5	1/2"	3774
	16,0	5/8"	
	20,0	3/4"	
	25,0	1"	
	TOTAL		4584kg

[illegible]

  
Antônio Américo Farias Lima  
Engenheiro Civil  
CREA - RNP 0691922941